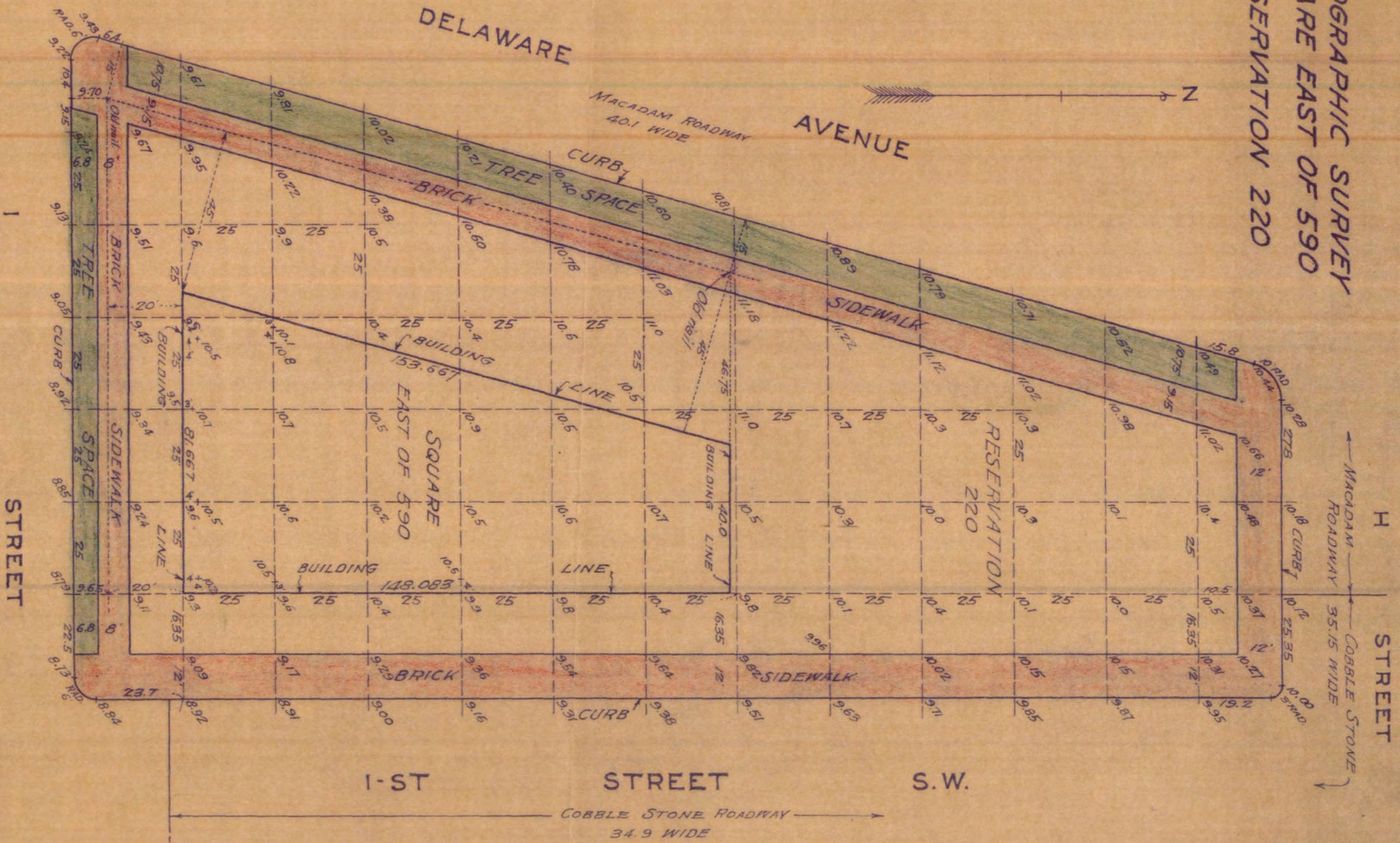


TOPOGRAPHIC SURVEY
 SQUARE EAST OF 590
 RESERVATION 220



Benchmark:
 Top of fire hydrant S.E.
 Corner of Delaware Avenue
 and I Street SW. E.I. = 12.22

SURVEYORS OFFICE, DISTRICT OF COLUMBIA

Surveyed and checked
 by *F. A. Dean*
 ACTING ASST. ENGINEER

Made for Capt. H. S. Bishop, Jr.
 S.O. 24243
 Scale: 1 inch = 20 feet
 Survey Book 127 Page 59

I certify that the survey shown
 hereon is correct.

Surveyors Office, D.C.
 January 5th 1939.

Robert
 Surveyor, District of Columbia.

MAP # 2168